



Fischer Panda®

Power wherever
you are™

Fischer Panda 7,5kW 48V 2500rpm drive

Technical specifications:

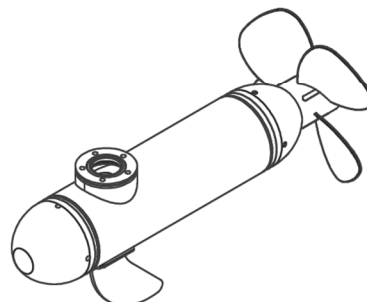
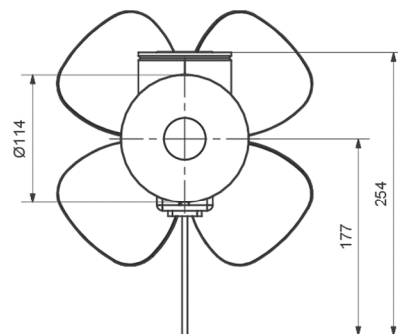
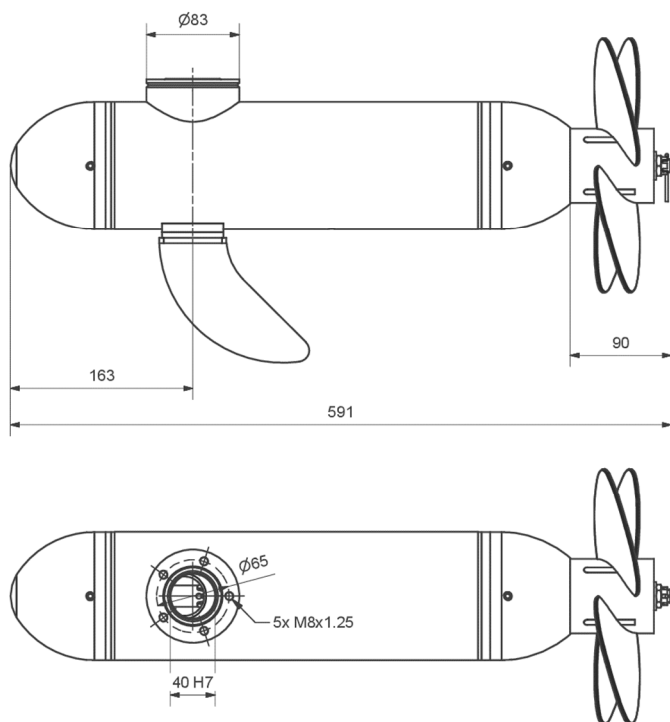
Voltage: 48V
Input power: 8 kW
Shaft power: 7,5 kW
RPM: 2500
Nm: 28
Weight: 23kg

Art-No: 0023076

Our underwater motors are made of heavy duties and high quality V4A stainless steel, in addition, our 3-stage seal provides the highest level of safety.

Our motors are without gear, brushless, sensorless and have no oil filling.


This makes our engines: durable, efficient and low maintenance!



Fischer Panda GmbH
Otto - Hahn - Str.40
33104 Paderborn
Germany

contact person:
Martin Mews
Gerhard Hesse
Marcel Schwarzenberg-U.

+49 5254 9202-350
+49 5254 9202-238
+49 5254 9202-352


mmews@fischerpanda.de
ghesse@fischerpanda.de
mschwarzenberg@fischerpanda.de



Fischer Panda®

Power wherever
you are™

Fischer Panda 10kW 48V 600rpm drive

Technical specifications:

Voltage: 48V
Input power: 11 kW
Shaft power: 10 kW
RPM: 600
Nm: 160
Weight: 76kg

Art-No: 0023077

Our underwater motors are made of heavy duties and high quality V4A stainless steel, in addition, our 3-stage seal provides the highest level of safety.

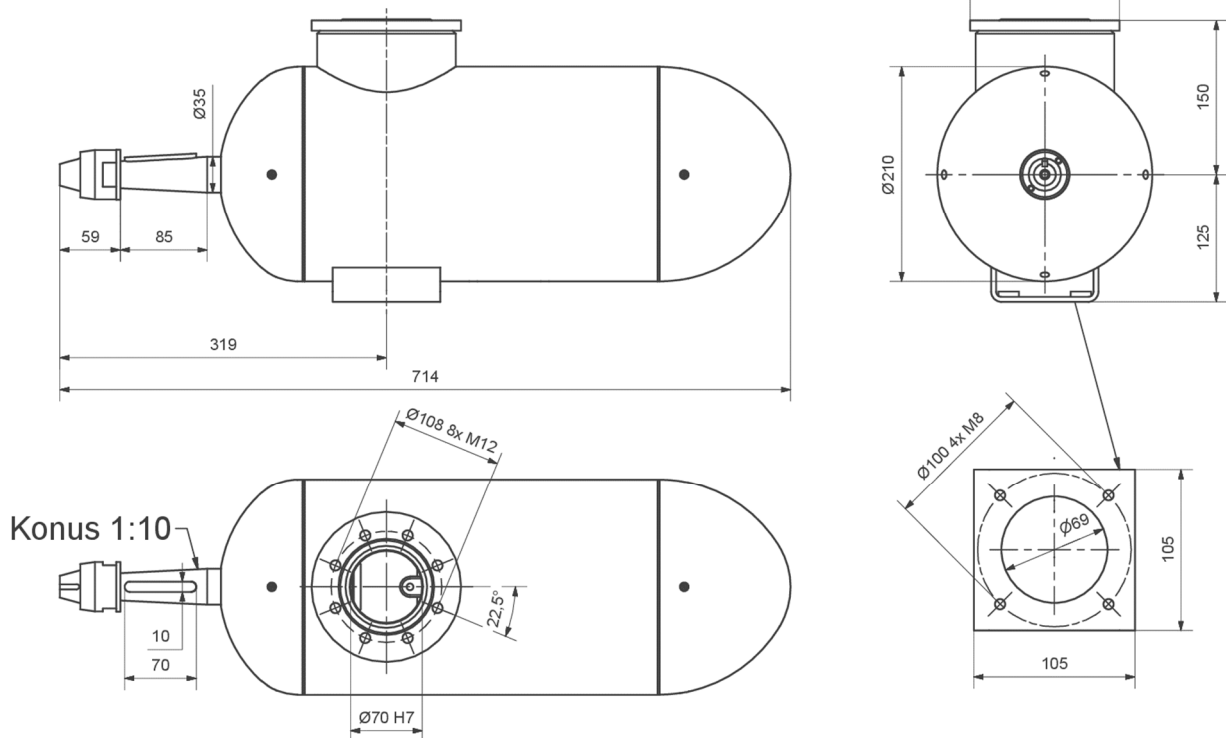
Our motors are without gear, brushless, sensorless and have no oil filling.

This makes our engines: durable, efficient and low maintenance!



Konus 1:10


suitable for standard propellers



Fischer Panda GmbH
Otto - Hahn - Str.40
33104 Paderborn
Germany

contact person:
Martin Mews
Gerhard Hesse
Marcel Schwarzenberg-U.

+49 5254 9202-350
+49 5254 9202-238
+49 5254 9202-352


mmews@fischerpanda.de
ghesse@fischerpanda.de
mschwarzenberg@fischerpanda.de



Fischer Panda®

Power
wherever
you are™

Fischer Panda 10kW 48V 1200rpm drive

Technical specifications:

Voltage: 48V
Input power: 11 kW
Shaft power: 10 kW
RPM: 1200
Nm: 79
Weight: 50kg

Art-No: 0000408

Our underwater motors are made of heavy duties and high quality V4A stainless steel, in addition, our 3-stage seal provides the highest level of safety.

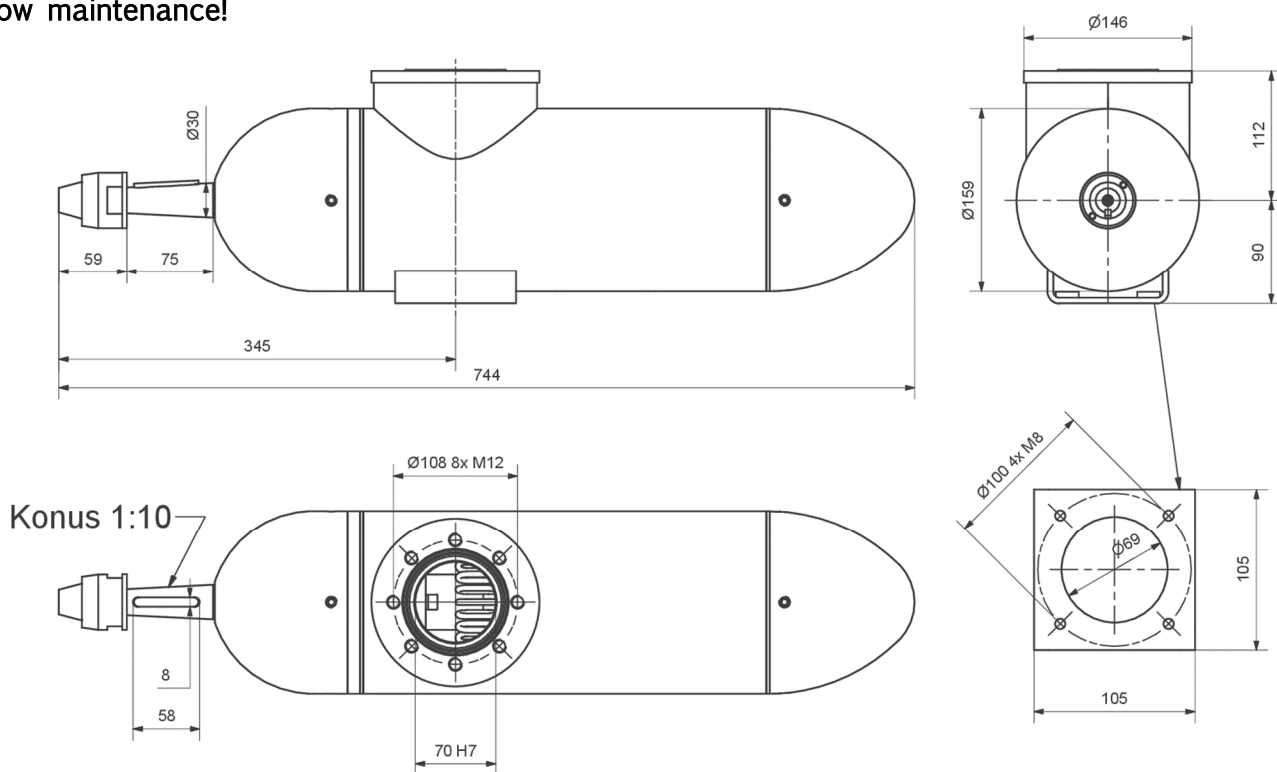
Our motors are without gear, brushless, sensorless and have no oil filling.

This makes our engines: durable, efficient and low maintenance!



Konus 1:10


suitable for standard propellers



Fischer Panda GmbH
Otto - Hahn - Str.40
33104 Paderborn
Germany

contact person:
Martin Mews
Gerhard Hesse
Marcel Schwarzenberg-U.

+49 5254 9202-350
+49 5254 9202-238
+49 5254 9202-352


mmews@fischerpanda.de
ghesse@fischerpanda.de
mschwarzenberg@fischerpanda.de



Fischer Panda®

Power wherever
you are™

Fischer Panda 20kW 48V 600rpm drive

Technical specifications:

Voltage: 48V
Input power: 22 kW
Shaft power: 20 kW
RPM: 600
Nm: 320
Weight: 120kg

Art-No: 0023079

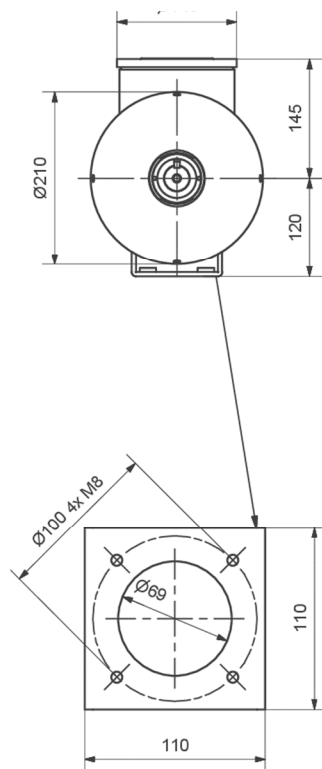
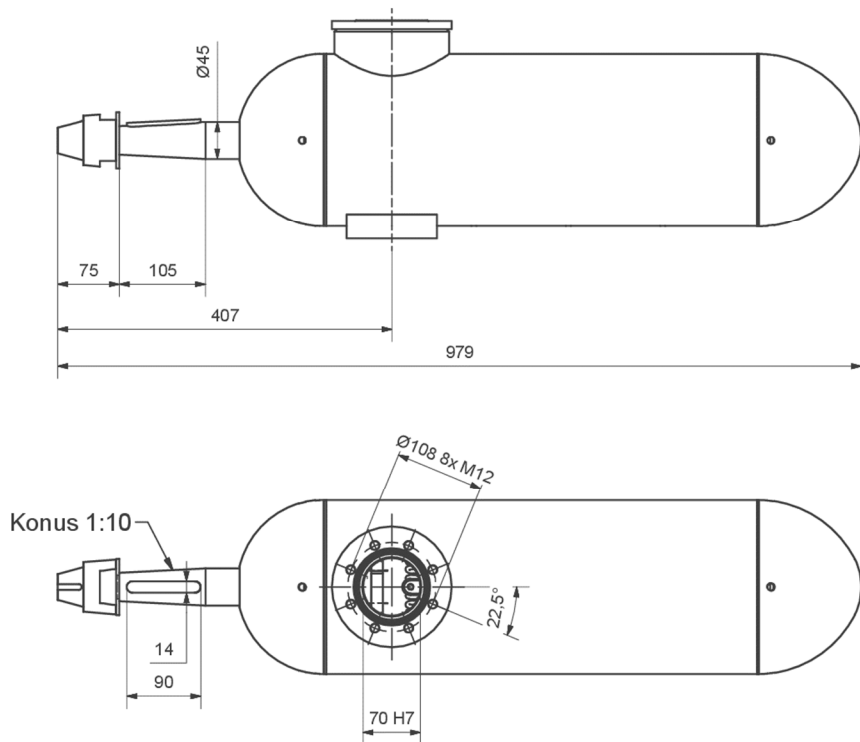
Our underwater motors are made of heavy duties and high quality V4A stainless steel, in addition, our 3-stage seal provides the highest level of safety.

Our motors are without gear, brushless, sensorless and have no oil filling.

This makes our engines: durable, efficient and low maintenance!




Konus 1:10
suitable for standard propellers



Fischer Panda GmbH
Otto - Hahn - Str.40
33104 Paderborn
Germany

contact person:
Martin Mews
Gerhard Hesse
Marcel Schwarzenberg-U.

+49 5254 9202-350
+49 5254 9202-238
+49 5254 9202-352


mmews@fischerpanda.de
ghesse@fischerpanda.de
mschwarzenberg@fischerpanda.de



Fischer Panda®

Power wherever
you are™

Fischer Panda 20kW 48V 1200rpm drive

Technical specifications:

Voltage: 48V
Input power: 22 kW
Shaft power: 20 kW
RPM: 1200
Nm: 160
Weight: 76kg

Art-No: 0023078

Our underwater motors are made of heavy duties and high quality V4A stainless steel, in addition, our 3-stage seal provides the highest level of safety.

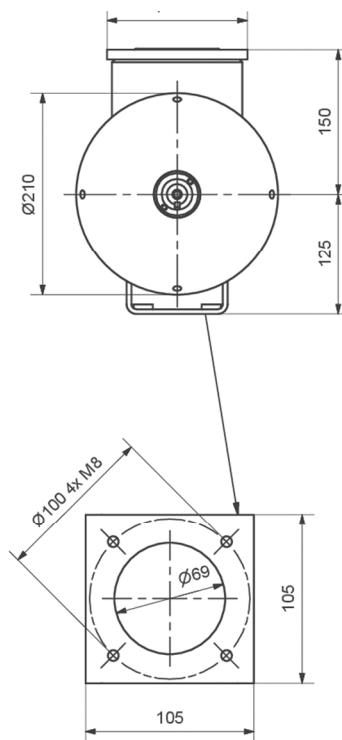
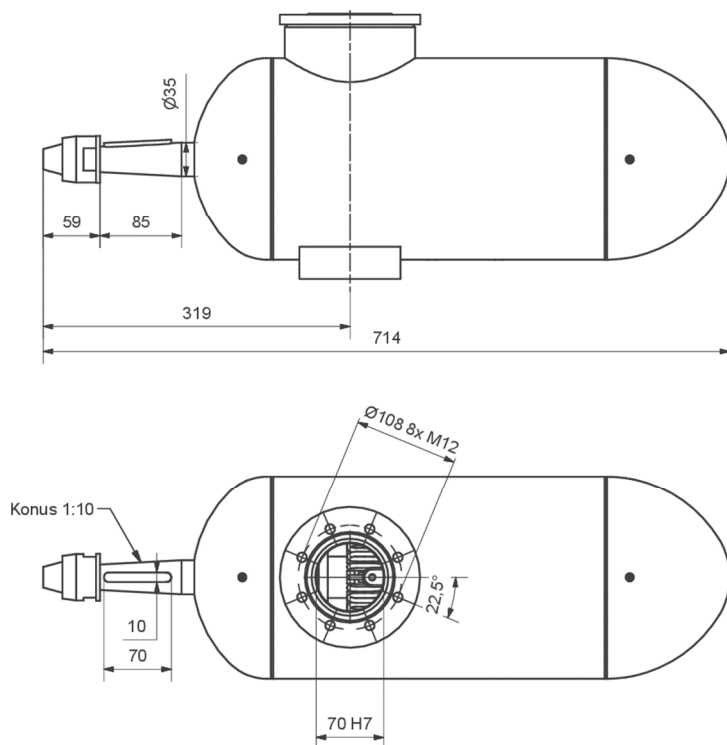
Our motors are without gear, brushless, sensorless and have no oil filling.

This makes our engines: durable, efficient and low maintenance!



Konus 1:10


suitable for standard propellers



Fischer Panda GmbH
Otto - Hahn - Str.40
33104 Paderborn
Germany

contact person:
Martin Mews
Gerhard Hesse
Marcel Schwarzenberg-U.

+49 5254 9202-350
+49 5254 9202-238
+49 5254 9202-352


mmews@fischerpanda.de
ghesse@fischerpanda.de
mschwarzenberg@fischerpanda.de



Fischer Panda®

Power wherever
you are™

Fischer Panda 30kW 360V 1200rpm drive

Technical specifications:

Voltage: 360V
Input power: 32 kW
Shaft power: 30 kW
RPM: 1200
Nm: 238
Weight: 90kg

Art-No: 0023080

Our underwater motors are made of heavy duties and high quality V4A stainless steel, in addition, our 3-stage seal provides the highest level of safety.

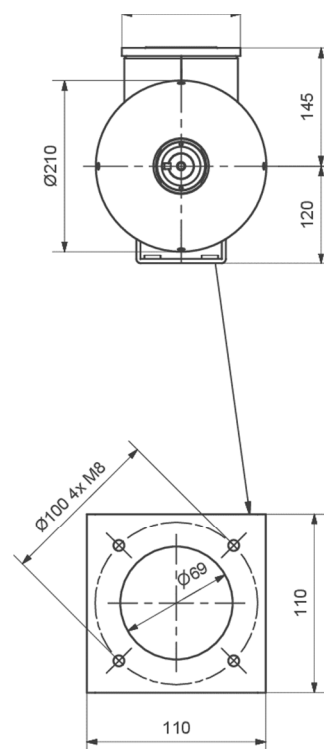
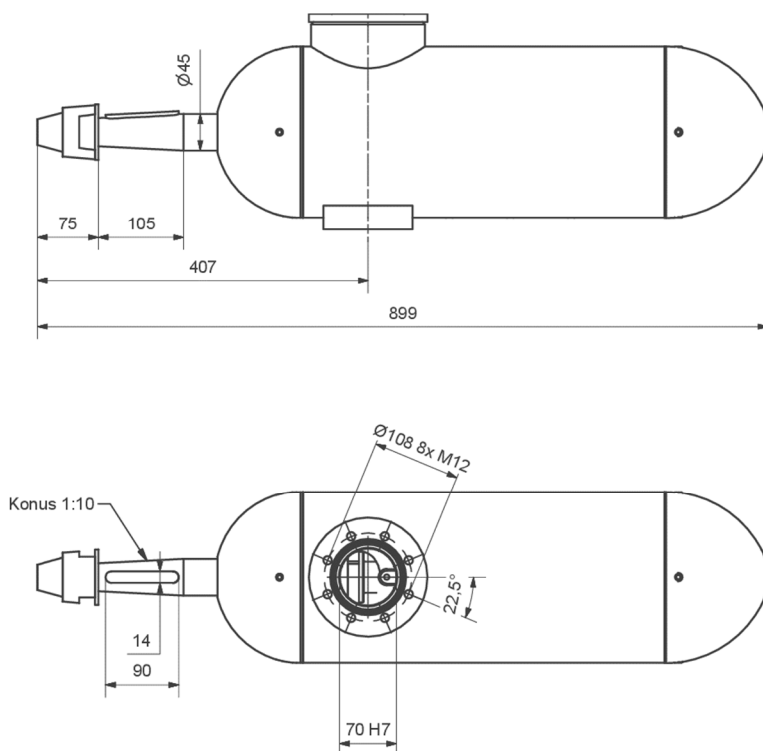
Our motors are without gear, brushless, sensorless and have no oil filling.

This makes our engines: durable, efficient and low maintenance!



Konus 1:10


suitable for standard propellers



Fischer Panda GmbH
Otto - Hahn - Str.40
33104 Paderborn
Germany

contact person:
Martin Mews
Gerhard Hesse
Marcel Schwarzenberg-U.

+49 5254 9202-350
+49 5254 9202-238
+49 5254 9202-352


mmews@fischerpanda.de
ghesse@fischerpanda.de
mschwarzenberg@fischerpanda.de



Fischer Panda®

Power wherever
you are™

Fischer Panda 50kW 420V 1200rpm drive

Technical specifications:

Voltage: 420V
Input power: 53 kW
Shaft power: 50 kW
RPM: 1200
Nm: 397
Weight: 138kg

Art-No: 0022797

Our underwater motors are made of heavy duties and high quality V4A stainless steel, in addition, our 3-stage seal provides the highest level of safety.

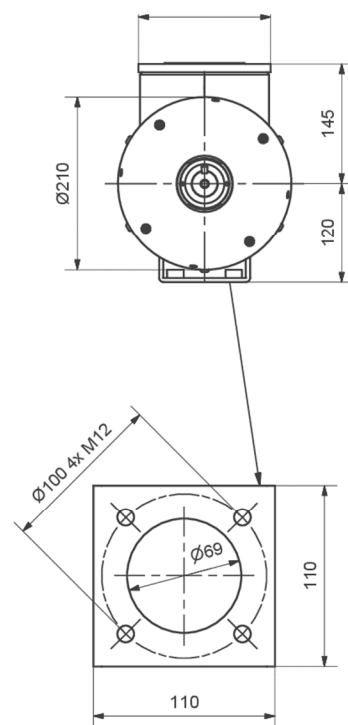
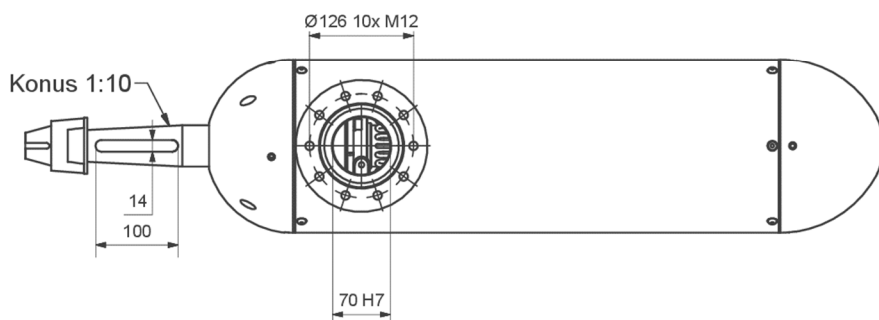
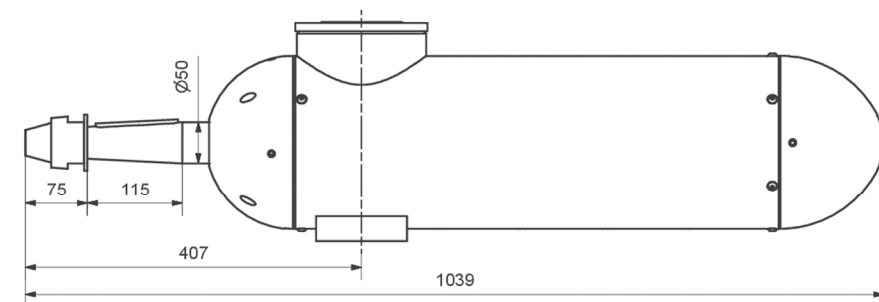
Our motors are without gear, brushless, sensorless and have no oil filling.

This makes our engines: durable, efficient and low maintenance!



Konus 1:10

suitable for standard propellers



Fischer Panda GmbH
Otto - Hahn - Str.40
33104 Paderborn
Germany

contact person:
Martin Mews
Gerhard Hesse
Marcel Schwarzenberg-U.

+49 5254 9202-350
+49 5254 9202-238
+49 5254 9202-352


mmews@fischerpanda.de
ghesse@fischerpanda.de
mschwarzenberg@fischerpanda.de



Fischer Panda®

Power wherever
you are™

Fischer Panda 80kW 420V 1900rpm drive

Technical specifications:

Voltage: 420V
Input power: 85 kW
Shaft power: 80 kW
RPM: 1900
Nm: 397
Weight: 138kg

Art-No: 0022797

Our underwater motors are made of heavy duties and high quality V4A stainless steel, in addition, our 3-stage seal provides the highest level of safety.

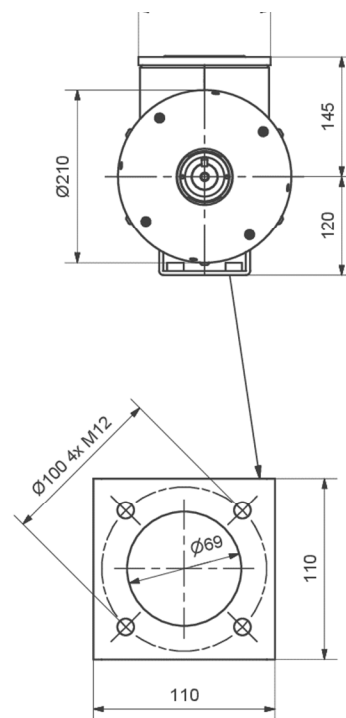
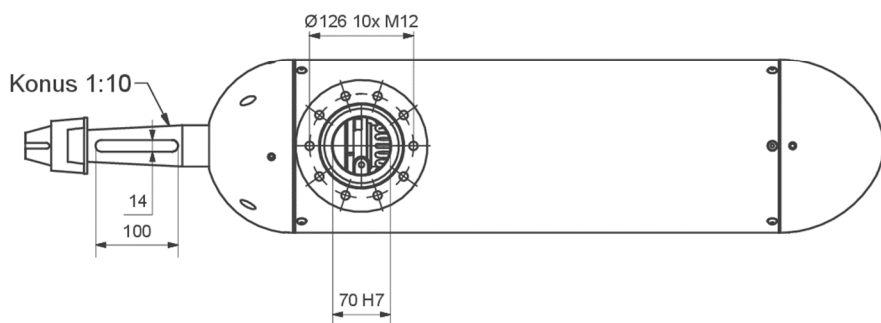
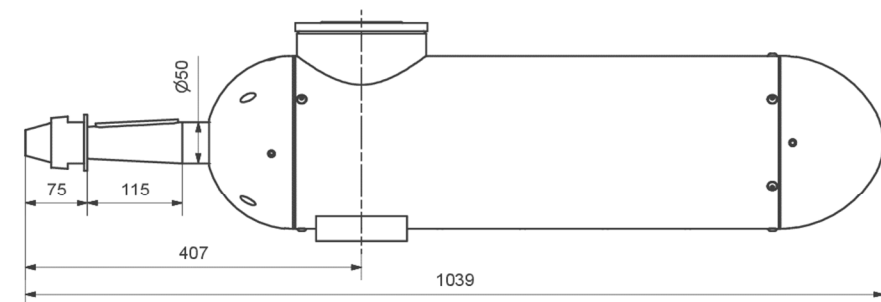
Our motors are without gear, brushless, sensorless and have no oil filling.

This makes our engines: durable, efficient and low maintenance!



Konus 1:10


suitable for standard propellers



Fischer Panda GmbH
Otto - Hahn - Str.40
33104 Paderborn
Germany

contact person:
Martin Mews
Gerhard Hesse
Marcel Schwarzenberg-U.

+49 5254 9202-350
+49 5254 9202-238
+49 5254 9202-352


mmews@fischerpanda.de
ghesse@fischerpanda.de
mschwarzenberg@fischerpanda.de



Fischer Panda®

Power wherever
you are™

Fischer Panda 100kW 420V 1200rpm drive

Technical specifications:

Voltage: 420V
Input power: 106 kW
Shaft power: 100 kW
RPM: 1200
Nm: 800
Weight: 219kg

Art-No: 0027716

Our underwater motors are made of heavy duties and high quality V4A stainless steel, in addition, our 3-stage seal provides the highest level of safety.

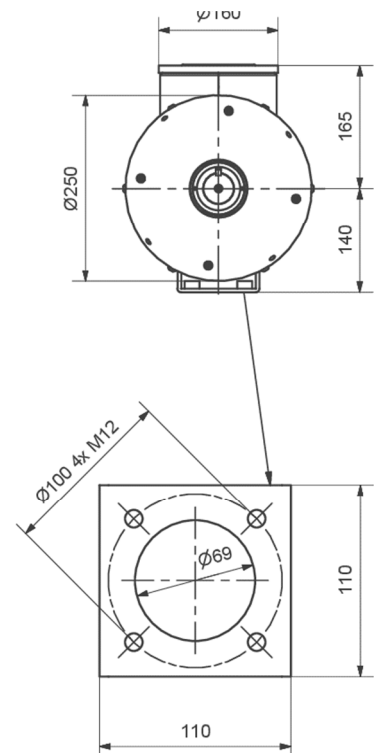
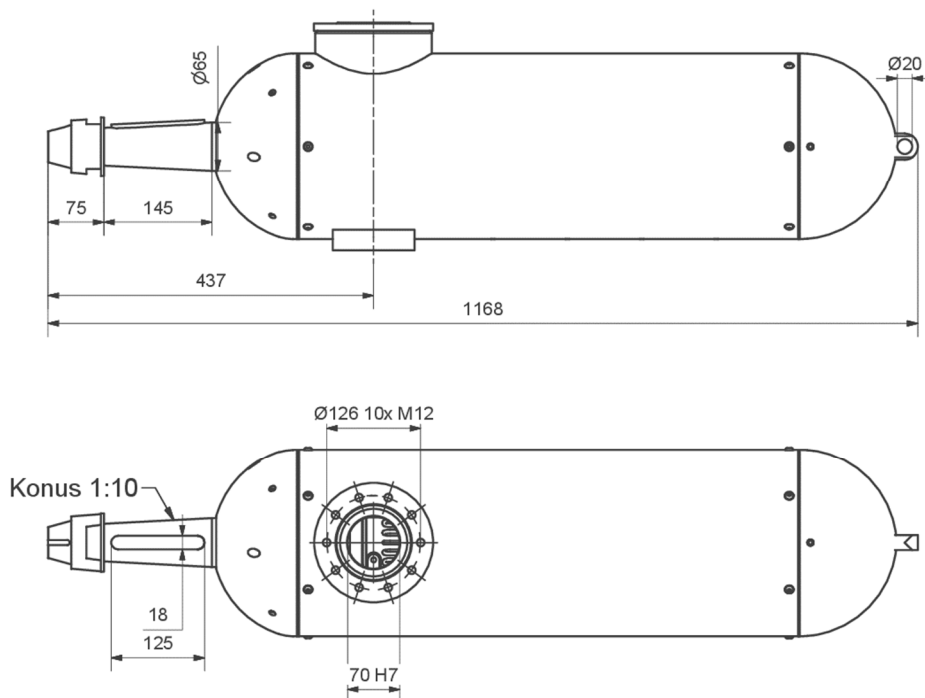
Our motors are without gear, brushless, sensorless and have no oil filling.

This makes our engines: durable, efficient and low maintenance!



Konus 1:10

suitable for standard propellers



Fischer Panda GmbH
Otto - Hahn - Str.40
33104 Paderborn
Germany

contact person:
Martin Mews
Gerhard Hesse
Marcel Schwarzenberg-U.

+49 5254 9202-350
+49 5254 9202-238
+49 5254 9202-352


mmews@fischerpanda.de
ghesse@fischerpanda.de
mschwarzenberg@fischerpanda.de